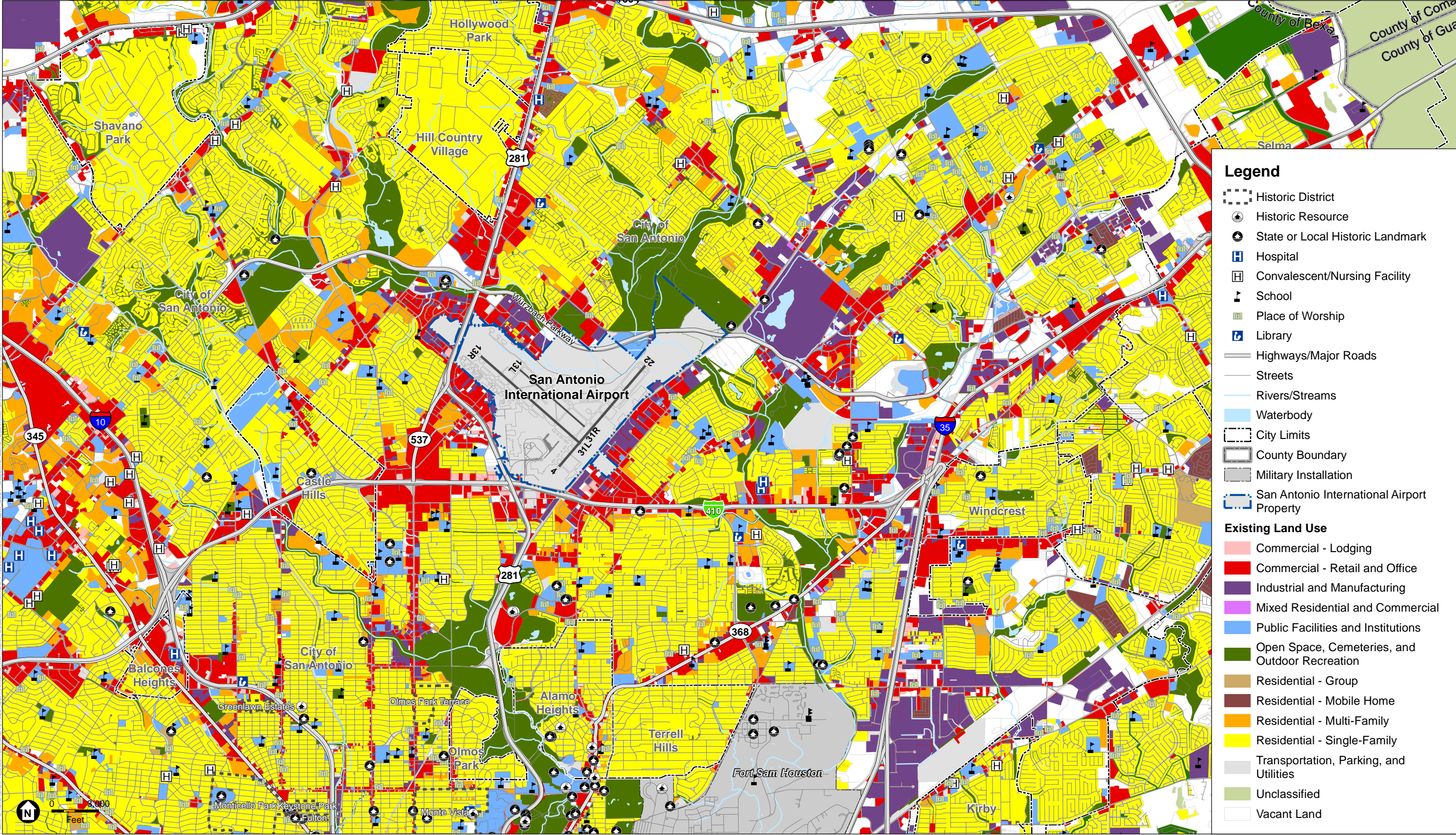


The draft 2021 Baseline Land Uses are for deliberative purposes only, are subject to change, and will not be used to determine eligibility for future noise mitigation efforts



SOURCE: City of San Antonio, 2019 (streets, historic districts, local historic landmarks); County of Bexar, 2019 (schools, libraries, places of worship, hospitals, existing land use); San Antonio River Authority, 2019 (city limits, military installations); US Census Bureau, 2019 (highways); USGS, 2019 (water bodies); National Park Service, 2019 (historic resources).

San Antonio International Airport Noise Exposure Map Update